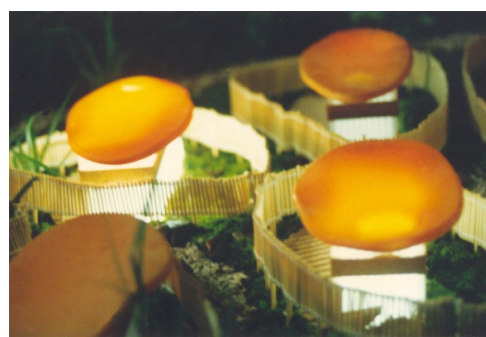
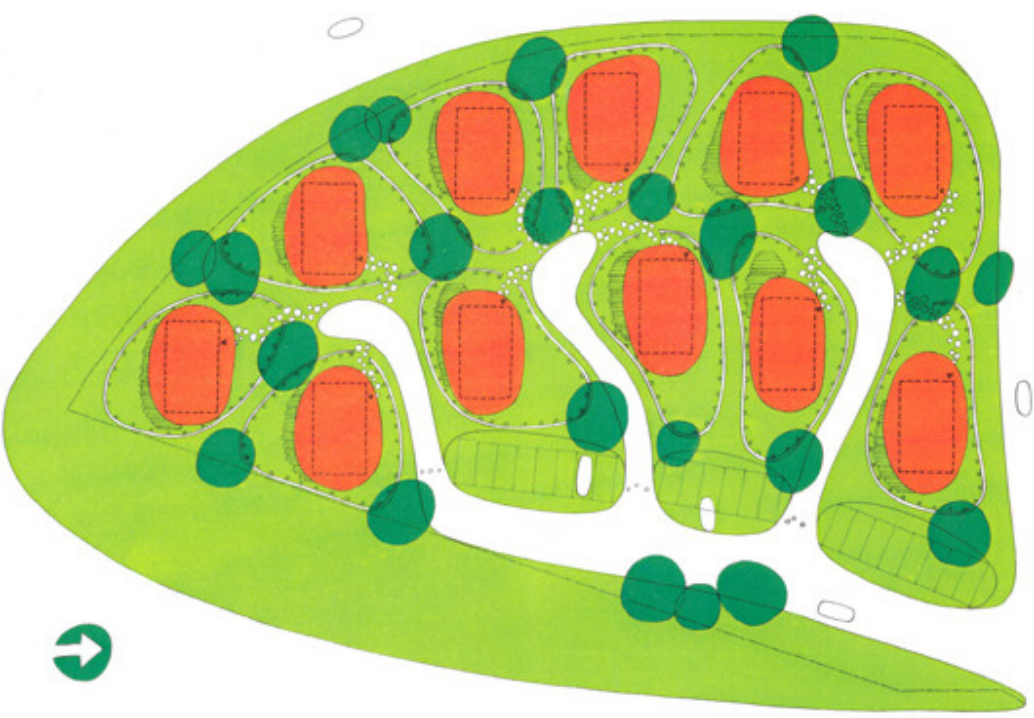
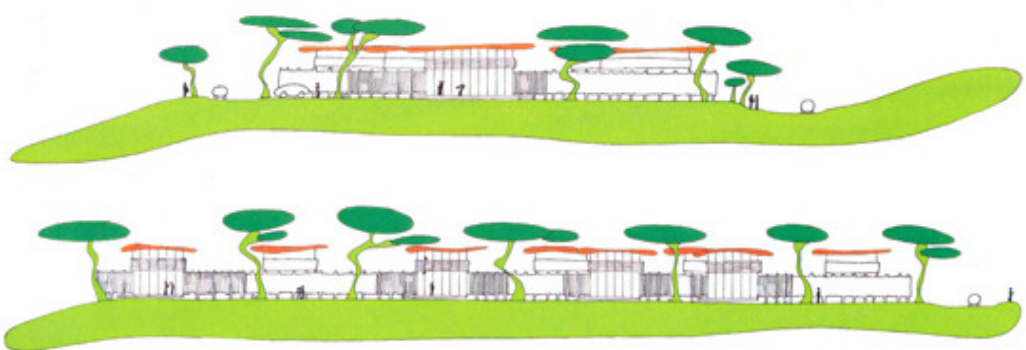
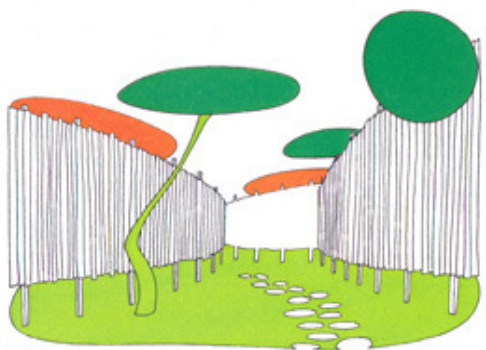
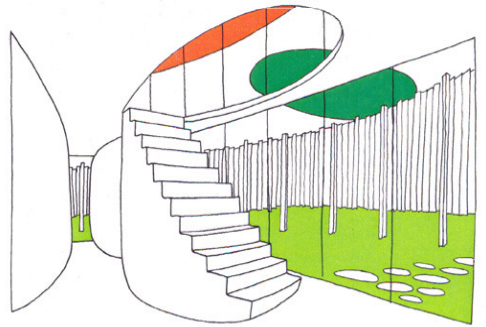
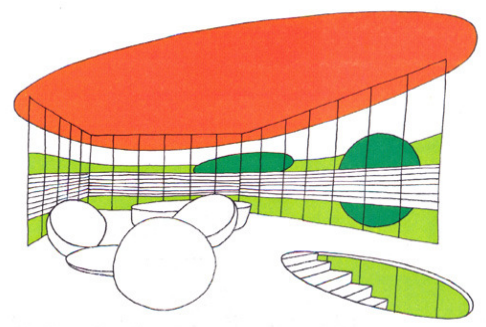




gifu blossoming

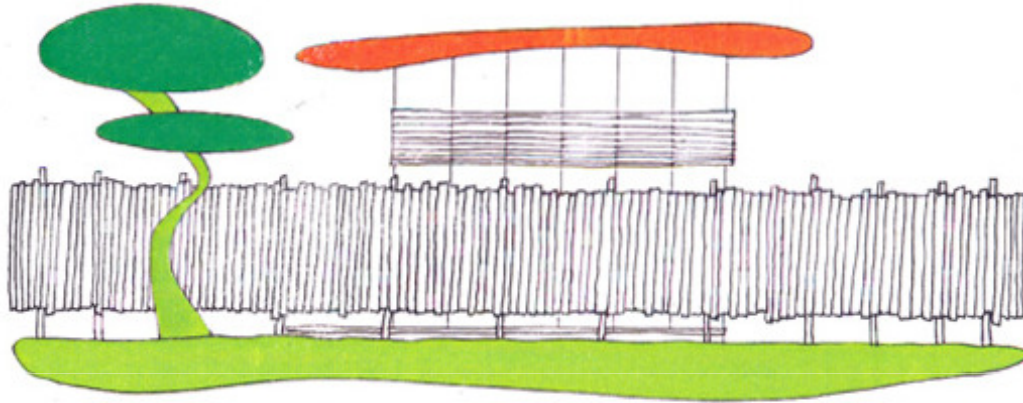
the blossoming of women's vision competition

project: the competition brief requested for a community of 11 family houses. the proposed project is based on a desire to live gently and harmoniously with nature, to plan life around it, to create a strong relationship between the intimate domestic space and the world beyond. the exterior scene embraces the precious inside-life and in between them pleasantly ambiguous spaces are generated so that the impression of space is a suggestion of more.

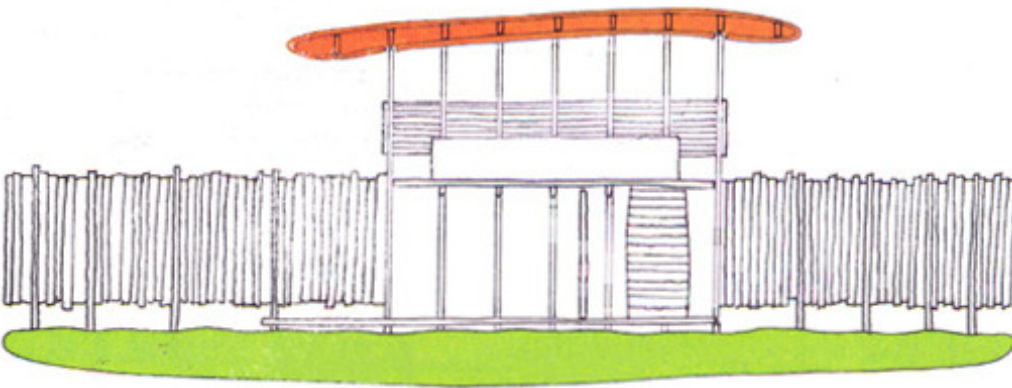




gifu blossoming



concept: upon arrival, cars are parked outside the living area, habitants pass through a transition zone: it helps people to distress on their way home, it is a transition in space and in mind. once inside, there are no straight roads or long opaque stretches of fence, but only naturally curved screens of bamboo and trees. walking through this smoothly landscaped environment evokes feelings of relaxation.



project the blossoming of women's vision competition
function public housing
location gifu prefecture japan
year 1995

eer architectural design
info@eerdessign.com