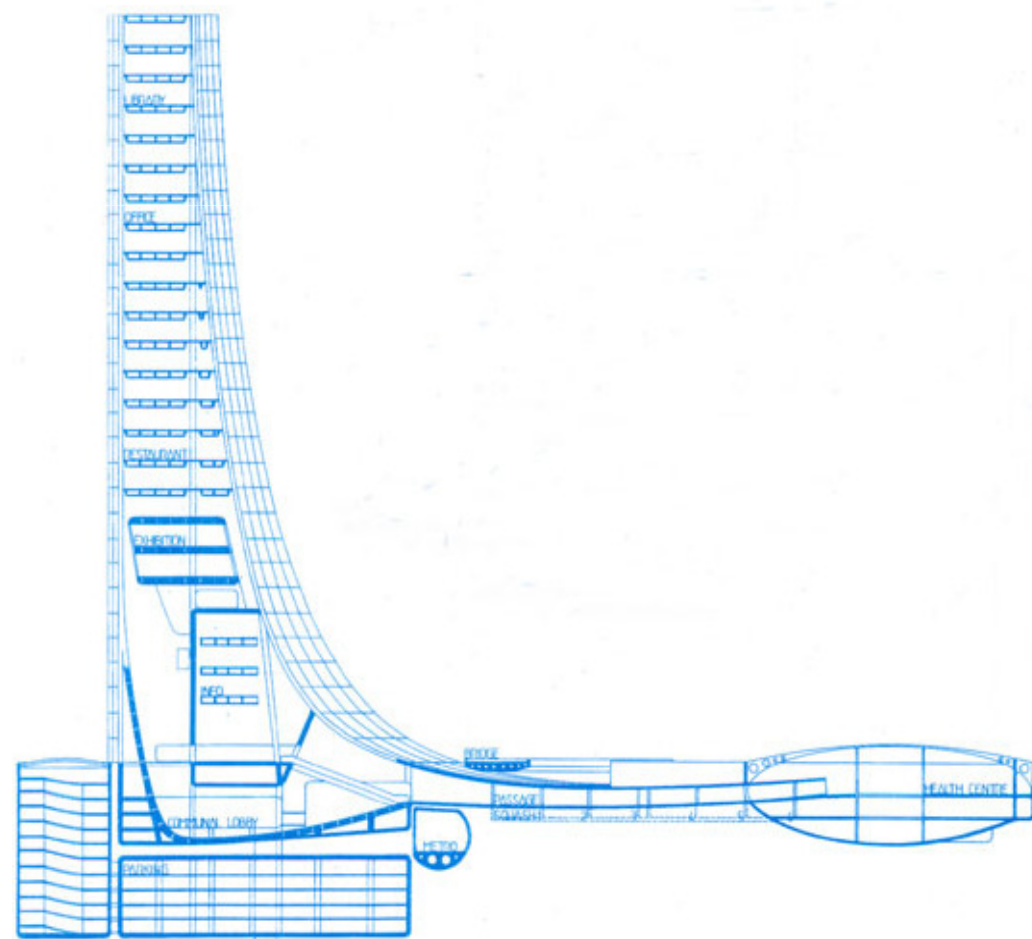
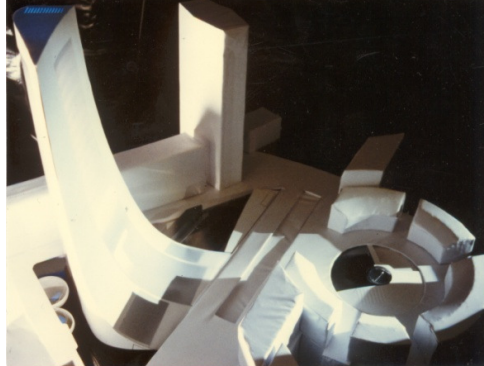


madou multifunctional high rise school project



project: situated along the ring road of brussels, a sad landscape of traffic nodes, highrise buildings and dramatic perspectives. this concept removes the skin of the city and shows what lies underneath. above, a new high rise building appears like a single surface that unites horizontal and vertical in a single fluent movement. it becomes one with the vehicular ring, like an oversize skate ramp. two cylinders lead from the black granite square to the parking garage. the entry hall on the lower level connects to an old shopping centre. in the square itself is a spa and health centre. the tower above is a place to please the human senses: exhibition spaces, offices, meeting rooms and a data bank on top.



project madou square
function multi functional
highrise
location brussels
belgium
year 1990

eer architectural design
info@eerdessign.com