

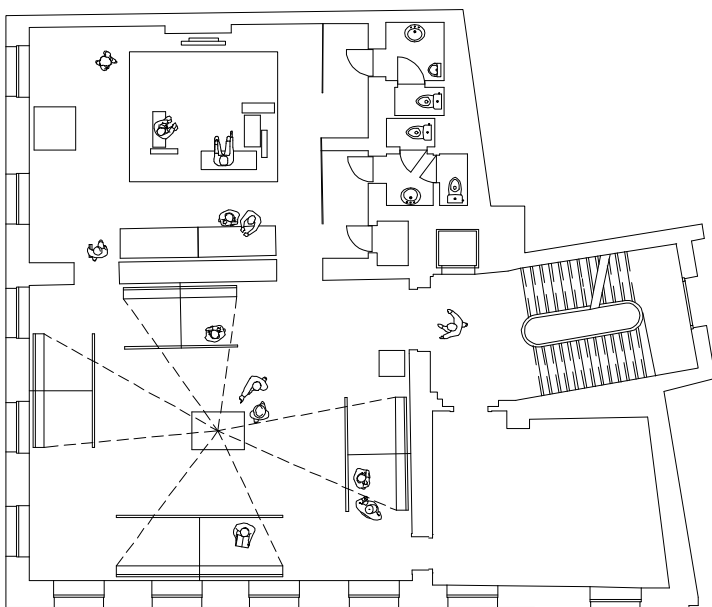
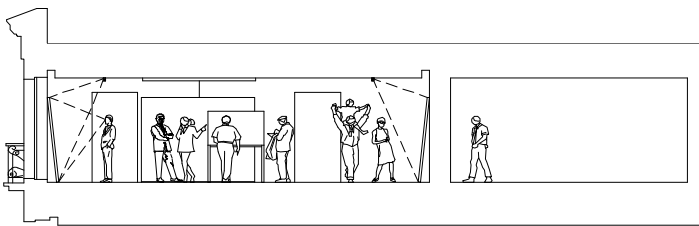


# de buren

exhibition vnh  
rauw architects



**project:** the netherlands and flanders created "de buren" (the neighbours) to represent and document the culture of the low countries. this cultural institution, a centre of debate, reflection, and promotion of the dutch language, is located in a classic building in the center of brussels. belgian architects RAUW designed an extension for additional conference rooms, information area, reading room and auditorium in a contemporary architectural style. the project was officially presented during an exhibition in the presence of belgian and dutch royalty.

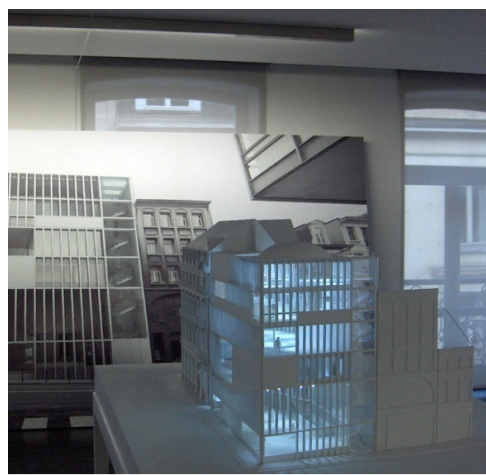




## de buren



**exhibition:** the first of two exhibition rooms is organised around the scale model. around the centrally positioned model, four large prints of 3D visualisations present views that correspond with the perspective of the viewer and the scale model. to evenly light these virtual paintings, lighting fixtures are made to measure. white leather seating on a wool carpet create a more homely atmosphere in the second room, smaller drawings on the wall and walk-through images on a flatscreen provide more detail on the project. both the exhibition space and the exhibited future project are entirely white.



**project** de buren  
**function** exhibition vnh  
 raw architects  
**city** brussels  
**country** belgium  
**year** 2006

**eer architectural design**  
 info@eerddesign.com