

er architectural design

House b.v. Overijse, Belgium

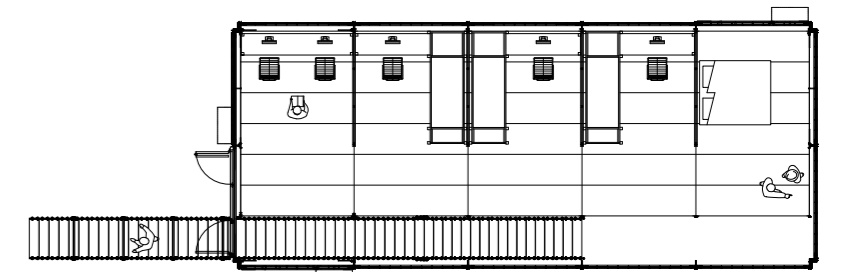
Housing construction is generally based on traditional ideas. The construction of their own house has stimulated the architects to question these basic principles and to think about housing and living in relation to family life. The owner allows a certain level of experimentation. The result is a construction wherein form and function, technique and art are complementary in a way that one would lose reason of existence without the presence of the other.

The fundamental idea is to give each inhabitant freedom in how to use the house. The functioning of the "plan libre" is parallel with a philosophy of life based on flexibility and respect for the other. Each individual has the possibility to retreat to his own private cell. But the plan provides mainly large common spaces to live, work, and play. There are no materialized separations between the functions, space is acquired according to the needs of the moment. A technical room and three movable bedrooms act as separation within the "plan libre".

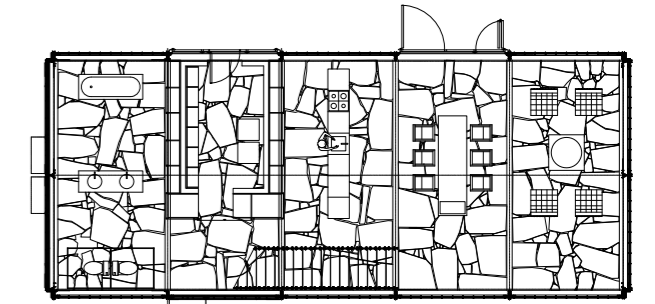
The architects conceived a steel structure that has been assembled on site with bolts only. All structural elements have been cut by "oxycoupage" from two plates of untreated steel, dimensioned 10m x 5m x 2cm and 10m x 5m x 3cm. Construction, techniques and finishing materials are shown in their rough state.

The house floats over the natural curves of the site through its construction on "pilotis". The greenery takes integral part in the concept: large bay windows and industrial folding doors ensure optimal contact with nature.

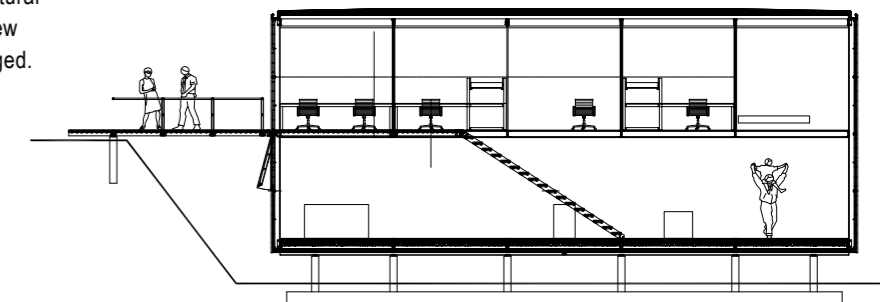
The façade consists of 50% fixed bay windows and 50% opening timber panels. On top of providing sufficient natural ventilation, this system adds a dimension to the façade: a traditional window, open or closed, unveils the same view on the exterior, it is transparent in either way and thus the surface creating contact with nature, remains unchanged. On the other hand, if a closed panel opens, an additional surface creates new perspectives.



Second Floor Plan



Ground Floor Plan



Section

